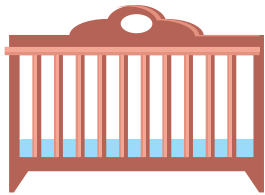


EVERY BABY TO

Supporting the healthy development of infants throughout Kansas City.



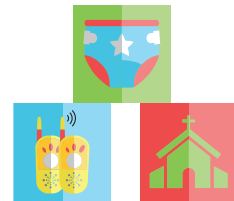
Every Baby to 1 works to ensure that every infant survives and thrives during their first year of life. To do this we promote the "3 S" approach to reduce the risk of Sudden Unexpected Infant Death (SUID).



SAFE SLEEP



SAFE SPACE



SOCIAL SUPPORT

OUR NEXT EVENT:



Join us to learn how you can help ensure the baby in your life has a healthy start!

CONTACT US FOR MORE INFORMATION:

New Bethel Church - 745 Walker Ave., Kansas City, KS • 913-281-1993 • info@everybabyto1.org • everybabyto1.org

This program is supported by:

